

Hochschule Bremen
City University of Applied Sciences



Social Work and Sustainability – Concepts and Methods for an Ecosocial Future



SocNet98 International University Week, 31 March – 4 April 2025
Hochschule Bremen, City University of Applied Sciences – School of Social Work



1. Topic: Social Work and Sustainability – Concepts and Methods for an Ecosocial Future

The IUW 2025 in Bremen will focus on the relationship between social work, sustainability, and the needed forms and interventions towards an ecosocial transformation of societies. The current climate crisis challenges us to meet new existential risks on macro, meso, and micro level and to reconsider and reflect lifestyles, forms of consumption, hegemonic models, and global and planetary relationships.

The social work profession needs new concepts, forms, and methods to protect addressees from the impacts of ecosocial problems, and to create settings for more socio-environmental justice. Beyond this, new models and methods to reflect and experience the human connection to nature and sustainability are needed.

On a theoretical level, new paradigms for an understanding of the human connection to ecology, well-being and social embeddedness, and a reflection of the post-humanistic and post-anthropocentric situation are required.

On a political level, new forms of inequality arise and a growing resistance of authoritarian counter-movements aims to hinder and discredit the needed transformations needs to be met. Hence, current societies and the social work profession are challenged in manifold ways.

2. Overview: IUW „Social Work and Sustainability“, HS Bremen, 31 March – 4 April 2025

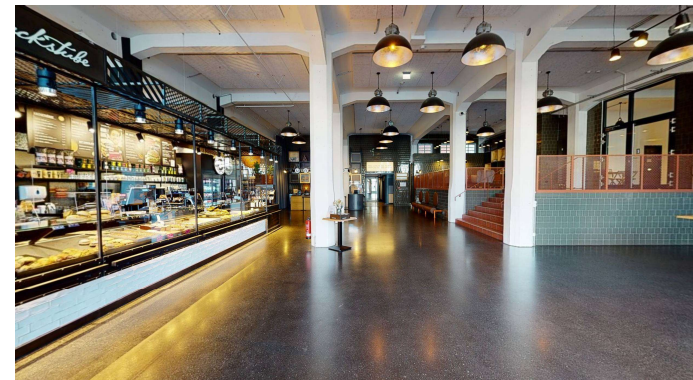
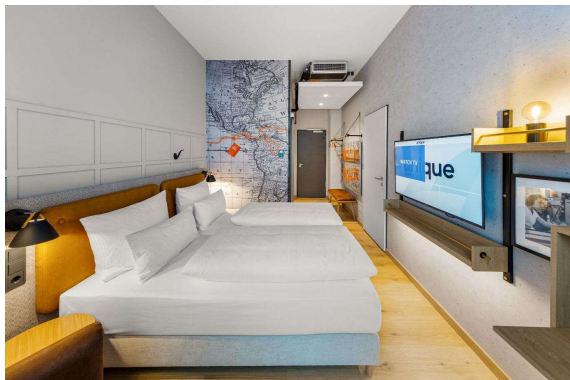
| | SUN, 30th | MON, 31st | TUE, 1st | WED, 2nd | THU, 3rd | FRI, 4th |
|-------------|---|---|---|---|--|--|
| 9:00-10:00 | | | 9:30 IUW Café | 9:30 IUW Café | 9:30 IUW Café | |
| 10:00-12:00 | | 10:00-12:00 Welcome reception SI 364 - Welcome - Dean (Faculty 3) - Overview - Group Games - Photo | 10.00-12.30: Workshops I | 10.00-12.30: Workshops II | 10.00-12.30 Workshops III | 10:00-12:00 Breakfast, certificates, thank yous and farewell |
| | | lunch at Mensa between 12.30 to 13.30 | | | 13:00 Lunch at Mensa | |
| 13.30-17.00 | 16:00-20.00 - Arrival at Hotel - Welcome | 14.00-16.00 Town Rallye | 13.30-16.00: City Storming | 14:00-17:00 Excursions | 14:00-18:00 Time for individual Activities | Departure |
| | 20:00 Evening meeting point: place tbc. (optional) | 18.00-20.00 International Evening – Buffet SI 364 20-22:00 Pub Tour | 18:00 Evening meeting point: place tbc. (optional) | 18:00 Evening meeting point: place tbc. (optional) | 18:00 Evening meeting point: place tbc. (optional) 22:00-x Party on MS Treue | |

3. Funding and Costs

- **BIP** (Formal partners Linz, Odense, Humak, Girona, St. Pölten): Open for all universities with Erasmus contracts with Bremen
- **BIP covers costs for program:** Workshops, excursions, cultural activities, lunches, party, one evening buffet
- **Participants have to cover:** Accomodation and travel costs

4. Accommodation

- **Students:** Unique Hotel Bremen, 40 Double Rooms, 84 € per night/room (or individual solutions)
(Individual booking directly with hotel, in pairs of two persons, or full room as a Single Room, reservations held until end of January)
- **Lecturers:** Motel One Bremen (our recommendation) (or Hotel Westfalia as second recommendation)
(Individual booking, reservations held until end of January 2025)
- **Students and lecturers have to cover:** Accommodation and travel costs



5. Deadlines

- **Names of lecturers and abstracts (workshops of 2,5 hours):** 10 December 2024 to christian.spatscheck@hs-bremen.de
- **Creation and publication of programme:** 17 December 2024
- **Formal registration of students:** 15 January 2025

6. Contact

Contact and responsible persons for program:

Prof. Dr. Christian Spatscheck and Sabine Ganter

Hochschule Bremen, City University of Applied Sciences, Faculty of Social Sciences, School of Social Work,
Neustadtswall 30, 28199 Bremen, Germany

christian.spatscheck@hs-bremen.de and sabine.ganter@hs-bremen.de

Location

Hochschule Bremen, City University of Applied Sciences, Campus Neustadtswall

Neustadtswall 30

28199 Bremen

Germany

Campus Map: <https://www.hs-bremen.de/en/location-and-access>

B.A program in Social Work: <https://www.hs-bremen.de/en/study/degree-programme/social-work-ba/>

M.A. program in Social Work: <https://www.hs-bremen.de/en/study/degree-programme/practice-research-and-innovation-in-social-work-ma/>